

partnership for
Sustainable Communities
an interagency partnership HUD • DOT • EPA



**WHAT WE DID, HOW WE DID IT,
AND WHY WE'RE BETTER FOR IT...**
*A Conversation with Partnership for Sustainable
Communities Grantees*



Cambridge, MA



Rick Garcia
Regional Administrator
HUD, Region 8

Today's Run of Show

- The Partnership: Setting the Stage
- Snapshots from Four Grantee Communities
- Moderated Conversation with Grantees and Audience Participation!



HUD-DOT-EPA Partnership for Sustainable Communities

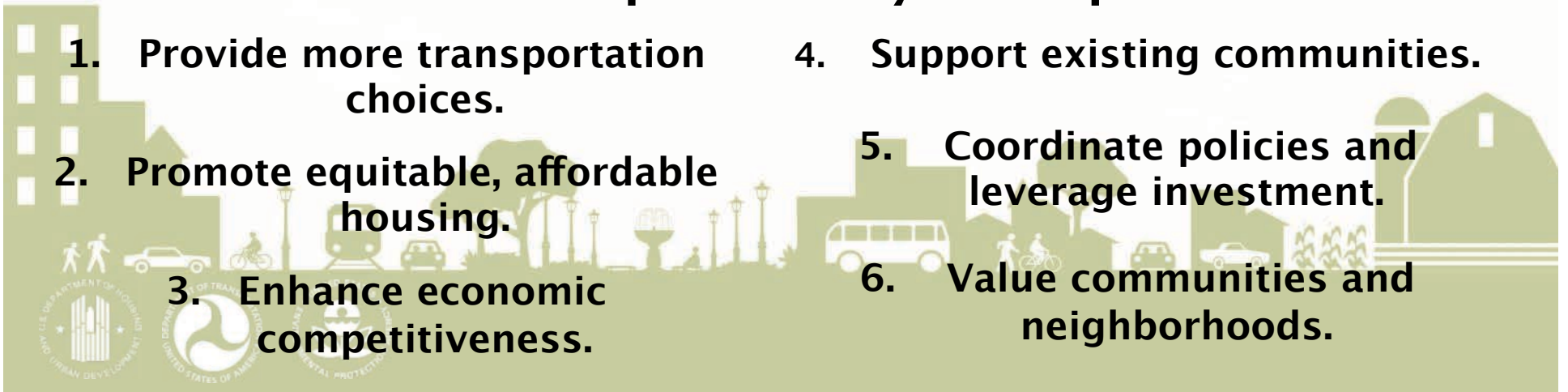


June, 2009



Partnership Livability Principles:

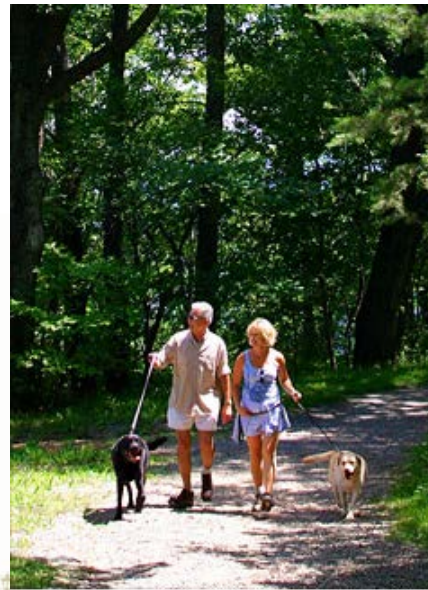
1. Provide more transportation choices.
2. Promote equitable, affordable housing.
3. Enhance economic competitiveness.
4. Support existing communities.
5. Coordinate policies and leverage investment.
6. Value communities and neighborhoods.



Supporting Local Communities

“The Partnership for Sustainable Communities is about asking communities what they need from the federal government, and helping them bring all the stakeholders to the table so they can realize their local visions for success.”

~ Secretary Shaun Donovan



COURTESY: ROANOKE VALLEY CVE



Roles in the Partnership

Housing and Urban Development

- Regional Planning
- Community Challenge
- Choice Neighborhoods
 - Affordable Housing Programs
 - Community Development Block Grants



Department of Transportation

- TIGER Grants
 - TCSP
- FTA Livability Grants
 - Transit
- FTA Core Programs
 - Flex Funding
- FHWA Discretionary Grants
 - United We Ride
- State/Metro Planning
- Intermodal Connectivity



Environmental Protection Agency

- Brownfields Planning Assistance
- Smart Growth Technical Assistance
 - Building Blocks
- Greening America's Capitals
- Water Infrastructure Funds

U.S.
Department
of
Commerce/
EDA

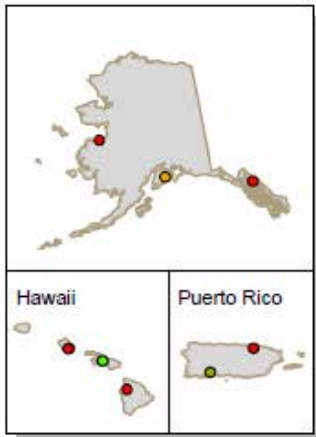
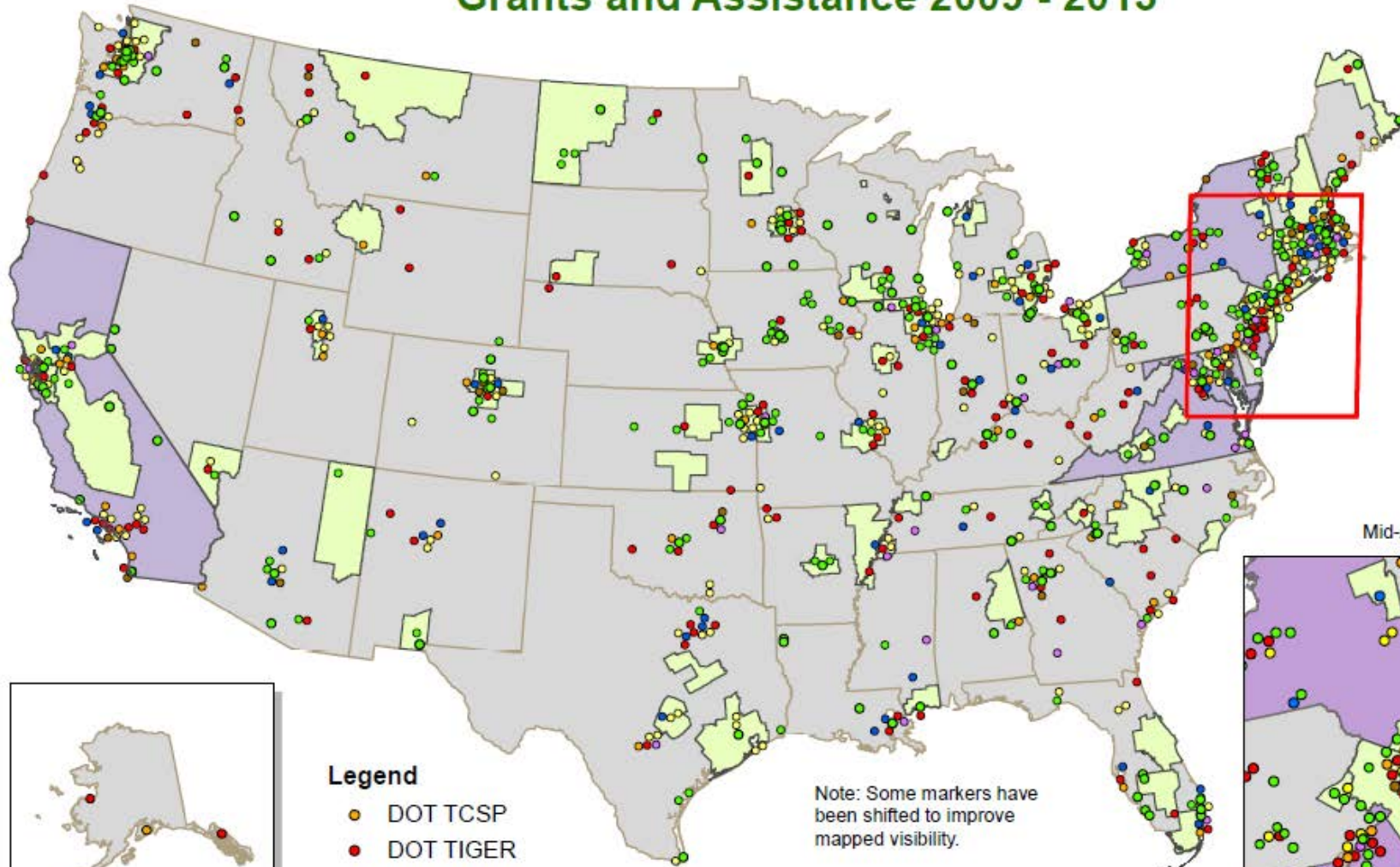
U.S.
Department
of
Agriculture

Demand for Assistance Far Exceeds Supply...

Since 2009, the Partnership has provided over \$4.6 billion in assistance to more than 900 communities in all 50 states, DC and Puerto Rico. To date, the Partnership has only been able to fund 10% of those communities seeking assistance.



HUD-DOT-EPA Partnership for Sustainable Communities Grants and Assistance 2009 - 2013

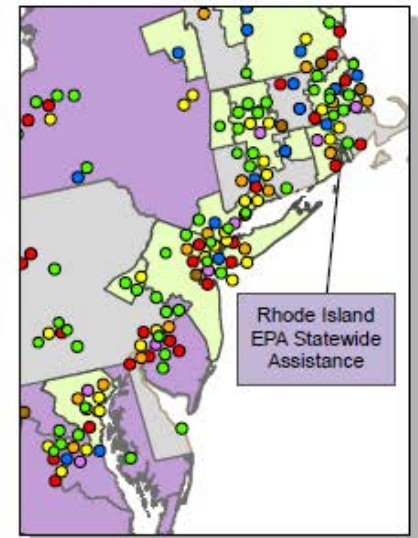


Legend

- DOT TCSP
- DOT TIGER
- DOT Transit
- EPA Brownfields Planning Assistance
- EPA Smart Growth Technical Assistance
- HUD Choice Neighborhoods
- HUD Community Challenge
- HUD Sustainable Communities Regional Planning Grant
- EPA Statewide Technical Assistance

Note: Some markers have been shifted to improve mapped visibility.

Mid-Atlantic Detail Map



Updated: June 13, 2013



Today's Presenters Represent Four Grantee Communities

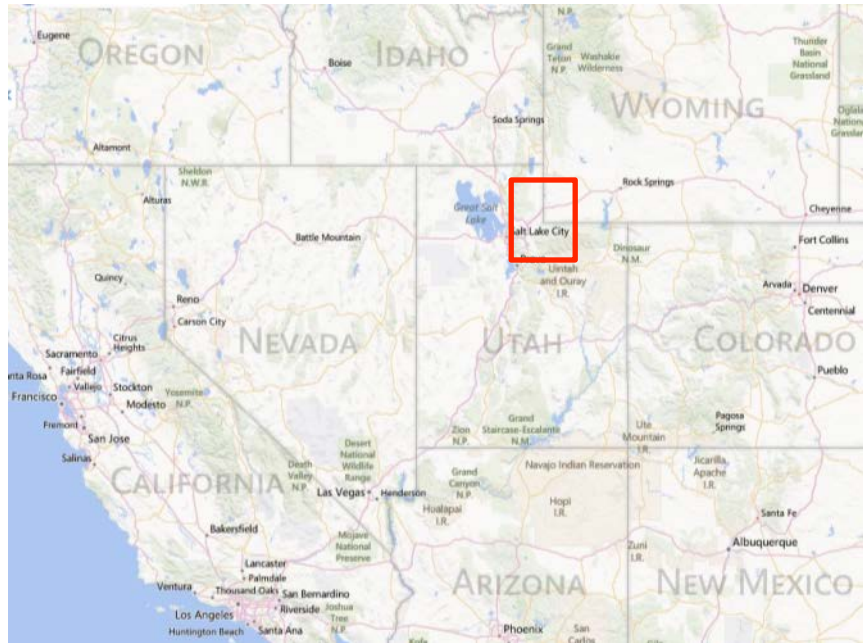




Ted Knowlton
Deputy Director
Wasatch Front
Regional Council



The Wasatch Front (greater Salt Lake City)



Building The Future We Want

Vision

Challenge and Opportunity

- With a strong and growing economy in the region, growth brings both benefits and challenges:
 - The study of the building plan and the 2040 vision can help us:
 - Realize our vision of new development and growth.
 - Plan for the 2040 growth and development and its impacts on the 2040 vision.
 - Address the 2040 vision of the region and its impacts on the 2040 vision.
 - Plan for the 2040 vision of the region and its impacts on the 2040 vision.
 - Plan for the 2040 vision of the region and its impacts on the 2040 vision.

Growth Principles for a Bright Future

- 1. Efficient Infrastructure**
Investing in infrastructure and building more compact, walkable communities can reduce the need for roads, bridges, and other infrastructure. This can help reduce the need for roads, bridges, and other infrastructure.
- 2. Regional Mobility (Transportation Choices)**
When a regional mobility transportation system is in place, it can help reduce the need for roads, bridges, and other infrastructure.
- 3. Coordinated Planning**
Coordinated planning can help ensure that infrastructure investments are coordinated and that infrastructure investments are coordinated.
- 4. Housing Choice**
Encouraging a variety of housing options, especially new small-unit, multi-unit, affordable housing, can help ensure that housing is available for people at all life stages and income levels.

Growth Principles Come to Life



- 1. Health and Safety**
When our communities are walkable, interconnected, and safe, we can help reduce the need for roads, bridges, and other infrastructure.
- 2. Regional Economy**
Strong, interconnected infrastructure can help reduce the need for roads, bridges, and other infrastructure.
- 3. Regional Collaboration**
Regional collaboration can help ensure that infrastructure investments are coordinated and that infrastructure investments are coordinated.
- 4. Sense of Community**
A sense of community can help ensure that infrastructure investments are coordinated and that infrastructure investments are coordinated.
- 5. Sustainability**
Sustainability can help ensure that infrastructure investments are coordinated and that infrastructure investments are coordinated.

Emission Utah's 3% Strategy

Utah's 3% Strategy is a plan to reduce greenhouse gas emissions by 3% by 2040. This strategy is a plan to reduce greenhouse gas emissions by 3% by 2040. This strategy is a plan to reduce greenhouse gas emissions by 3% by 2040.

The Greater Wasatch Vision for 2040

The Greater Wasatch is one region, stretching from Weber County south to Utah County and from Teton County east to the Wasatch Basin. We compete economically with other regions, comprise one job and housing market, and share the same air and water. Where and how we shape tomorrow's neighborhoods, communities, and economic centers within our region will dramatically affect the quality of our lives, including how much time and money we spend getting around, the quality of the air we breathe, and the choices we have available to live, work, shop, and play.



Wasatch CHOICE for 2040

Highlights

Vision Benefits
The Wasatch Choice for 2040 is a vision for how growth should unfold in our region. When compared with a business-as-usual scenario, the benefits of the vision include:

- Reduced greenhouse gas emissions.
- Reduced water consumption.
- Reduced air pollution.
- Reduced noise pollution.
- Reduced traffic congestion.
- Reduced infrastructure costs.
- Increased economic growth.
- Increased quality of life.
- Increased community resilience.
- Increased regional connectivity.
- Increased regional equity.
- Increased regional sustainability.
- Increased regional inclusivity.
- Increased regional transparency.
- Increased regional accountability.
- Increased regional responsibility.
- Increased regional integrity.
- Increased regional honor.
- Increased regional respect.
- Increased regional care.
- Increased regional compassion.
- Increased regional kindness.
- Increased regional generosity.
- Increased regional mercy.
- Increased regional grace.
- Increased regional favor.
- Increased regional kindness.
- Increased regional generosity.
- Increased regional mercy.
- Increased regional grace.
- Increased regional favor.



Wasatch Choice for 2040

- 4-county regional vision
- Initiated in 2005



Deliverables: the Wasatch Choice 2040 Toolbox



Envision Centers



Housing & Opportunity Assessment



Envision Tomorrow Plus



Implementing Centers



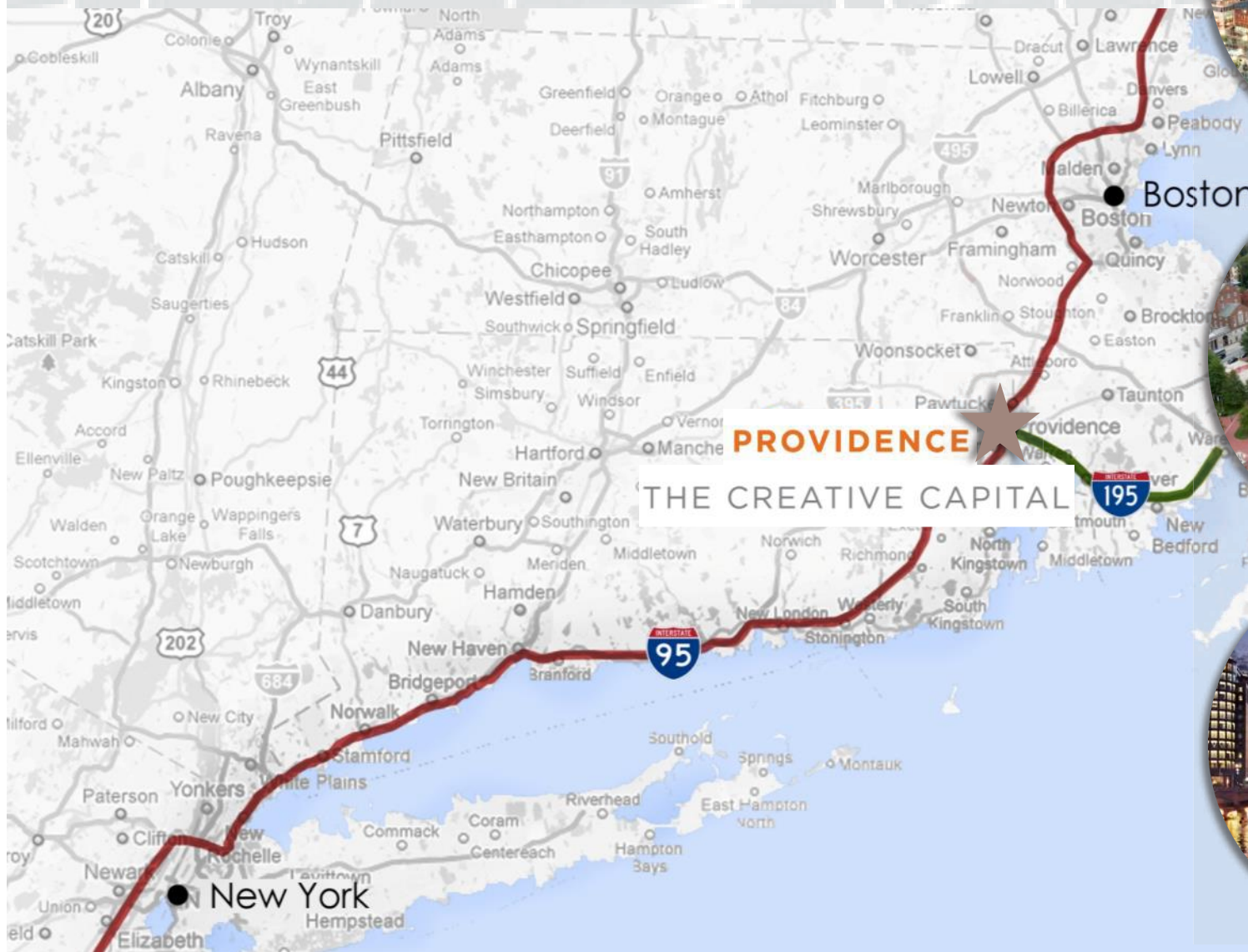
Template Form Based Code

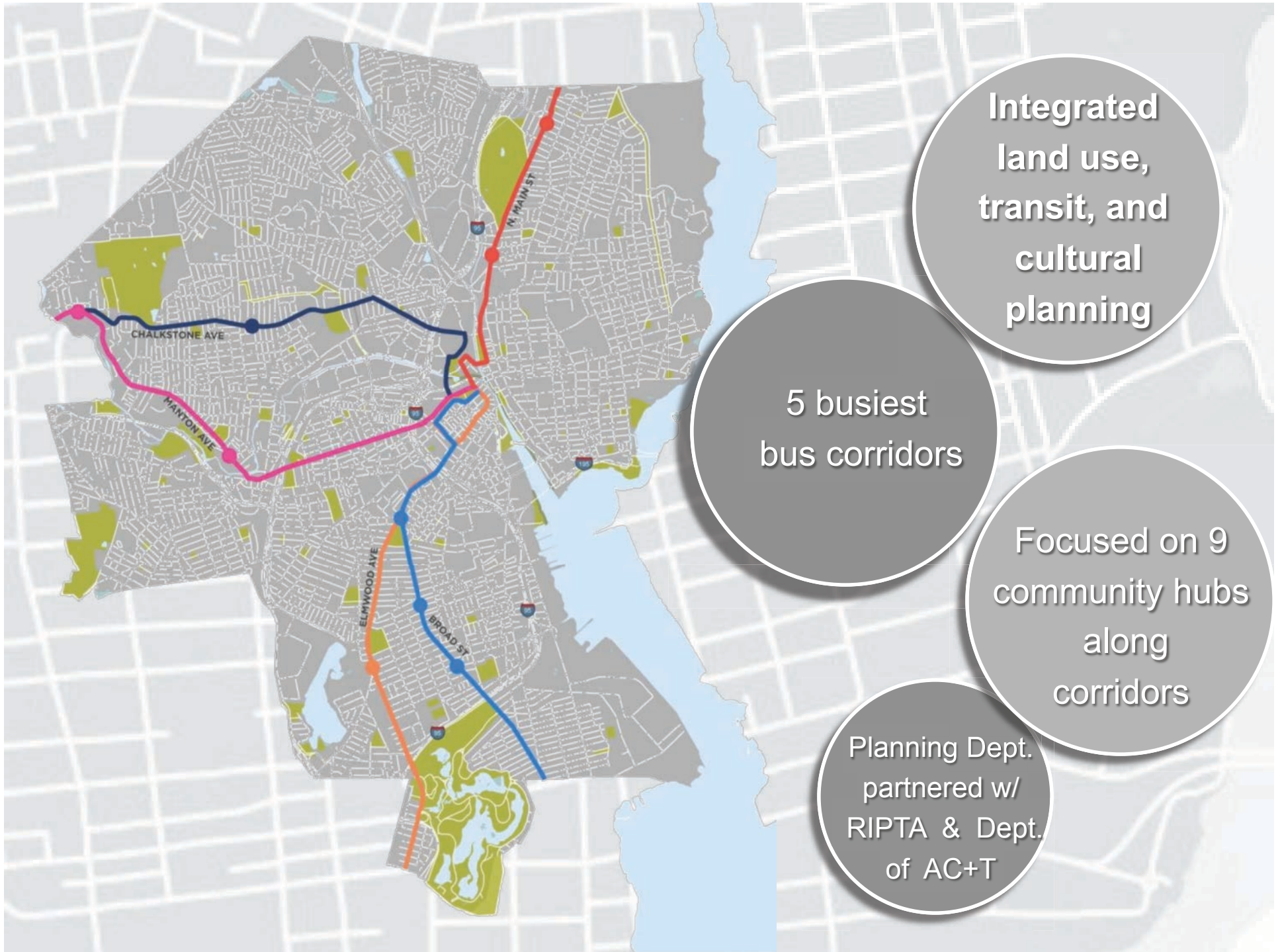


CITY OF PROVIDENCE, RI

Transportation Corridors to Livable Communities

FY10 COMMUNITY CHALLENGE GRANT





Integrated land use, transit, and cultural planning

5 busiest bus corridors

Focused on 9 community hubs along corridors

Planning Dept. partnered w/ RIPTA & Dept. of AC+T

Encourage development that supports transit



Existing land use



Vacant/
underutilized
land

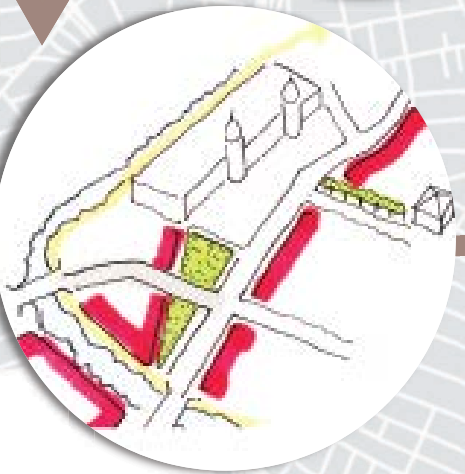


Businesses
& jobs

Urban
design
analysis



Build out
scenarios



RE:ZONING
PROVIDENCE
re:imagine re:define re:vitalize

Improve bus stop spacing, locations

Enhance amenities at bus stops



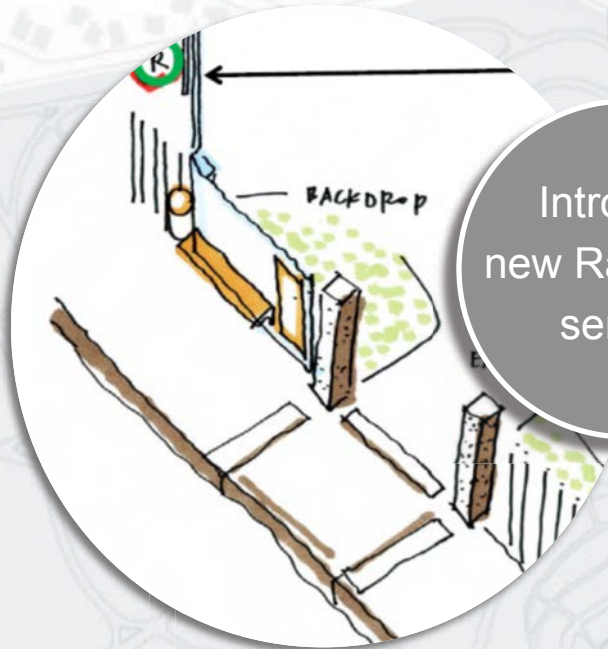
Invest in transit that supports development



Integrate art, create sense of place



Introduce new Rapid Bus service



R
LINE

Ensure other corridors are "Rapid ready"





Integrate arts and culture

Inventory existing cultural amenities



Develop local themes to guide art



Develop strategies to activate and mitigate



FORGING FEDERAL AND LOCAL PARTNERSHIPS TO REDEVELOP BROWNFIELDS AND CREATE A SUSTAINABLE COMMUNITY

Andrew P. Blake
City Manager

www.RansonRenewed.com

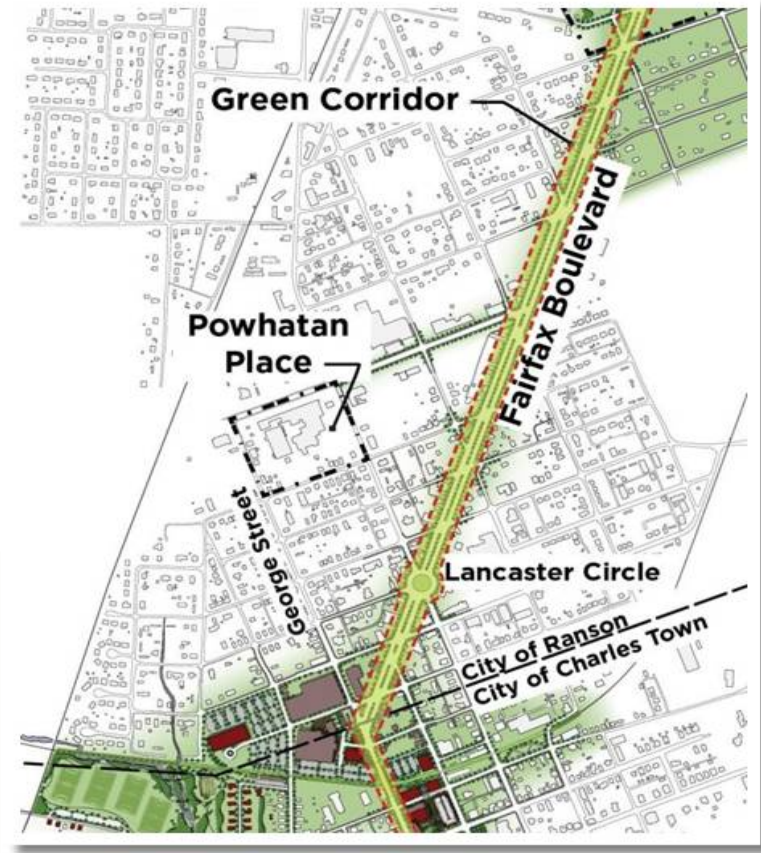


Grants to Date (Major):

- **2001** – EPA Hazardous Assessment – \$ 250,000
- **2004** – EPA Hazardous Assessment – \$ 145,000
- **2006** – EPA Hazardous Assessment – \$ 200,000
- **2009** – ARRA Grant – \$ 500,000
- **2010** – EPA Area-wide Planning – \$
175,000
- **2010** – DOT Tiger II / HUD Challenge – \$
\$1,400,000
- **2011** – EPA Clean-up (Kidde) – \$ 200,000
- **2011** – HUD 108 Grant – \$
\$1,500,000
- **2011** – HUD BEDI Loan – \$
\$2,000,000
- **2012** – DOT Tiger IV – \$5,000,000



WHERE ARE WE?



A BEDROOM COMMUNITY OF
WASHINGTON, DC

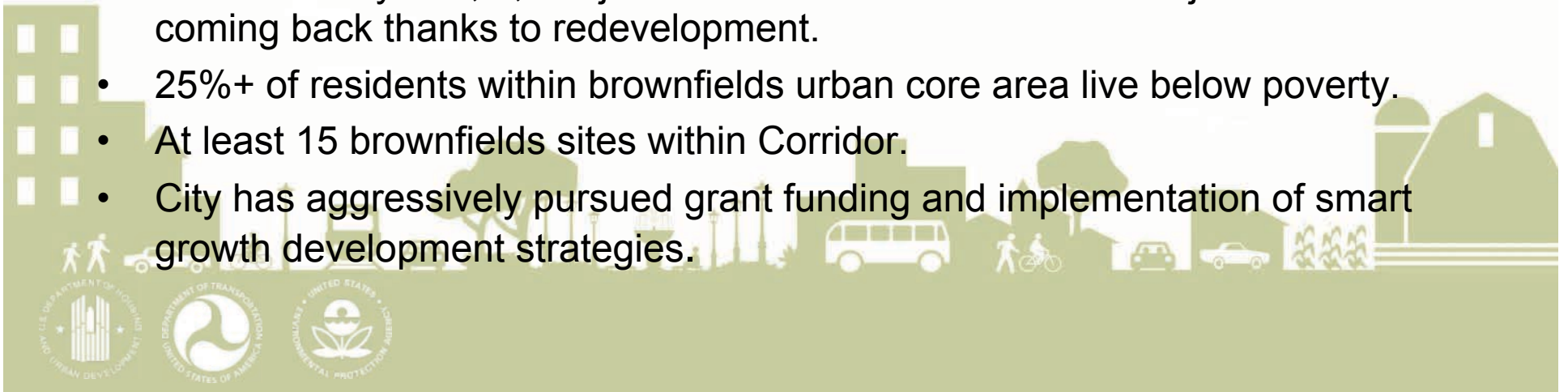
A CONNECTED COMMUNITY WITH
CHARLES TOWN, WV



partnership for
Sustainable Communities
an interagency partnership HUD • DOT • EPA



- Decade-long relationship with EPA helped forge alliances with HUD and DOT through the Partnership for Sustainable Communities.
- Commerce Corridor Initiative (Brownfields Corridor) began in 1999 where the vision was defined.
- Recipient of three (3) EPA Hazardous Brownfields Assessment grants; (3) grants under the Partnership for Sustainable Communities: EPA Area-Wide Pilot Planning and EPA Building Blocks Grant; HUD Challenge Planning Grant and DOT TIGER II; DOT TIGER IV Grant to construct a complete green street.
- Over last 15 years, 1,500 jobs lost in Brownfields Corridor – jobs are now coming back thanks to redevelopment.
- 25%+ of residents within brownfields urban core area live below poverty.
- At least 15 brownfields sites within Corridor.
- City has aggressively pursued grant funding and implementation of smart growth development strategies.

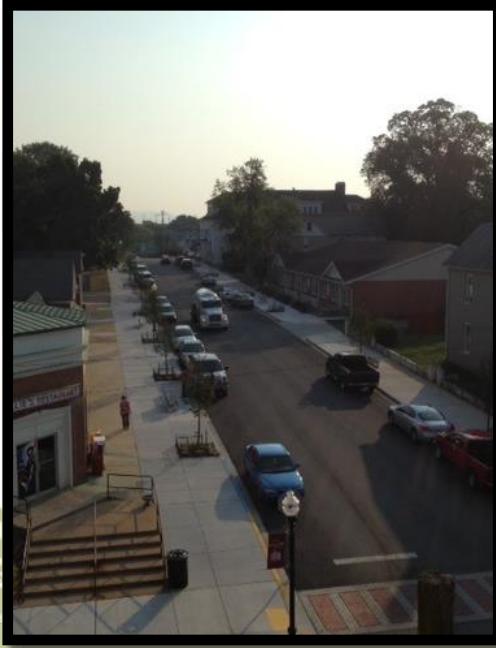




New Parks



New Jobs



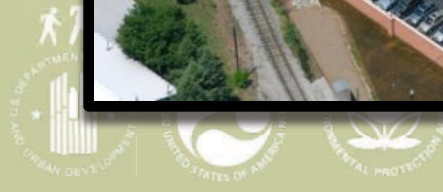
New Infrastructure



New Zoning and Development Plans



American Public University



Fairfax Boulevard completion in brownfields area



Complete Street

DOT TIGER II grant for
\$800,000 for
complete design,
engineering,
construction
documents

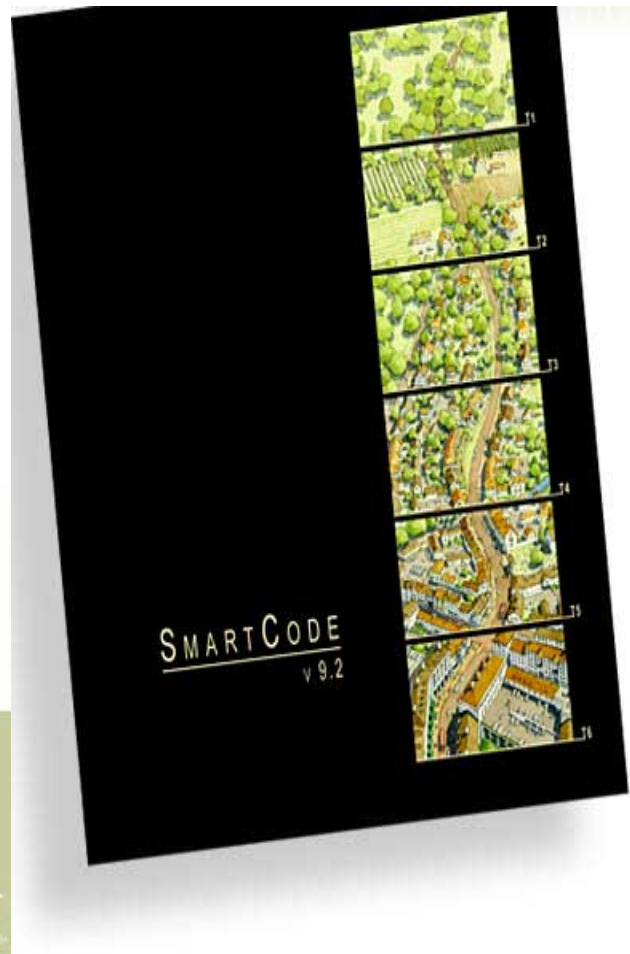
Will provide a vital link
from major thorough-
fare to Brownfields
Commerce Corridor

Awarded \$5,000,000
DOT TIGER IV in June
2012 to start
construction at start of
2014.

Total Construction



Implementation of new form-based zoning within brownfields area to encourage re-development



Emphasis on form
(design)

Provides for mixing of
uses

Promotes diverse
environments

More emphasis on
administrative
approvals





Lessons Learned (and still being learned):

1. Create a compelling story and vision with pictures.
2. Commit to the vision with patience and persistence.
3. Have strong leaders and partners who will stick to the vision and will allow failure along with success – failures and setbacks will happen.
4. Ensure short-term success – even if successes are small.



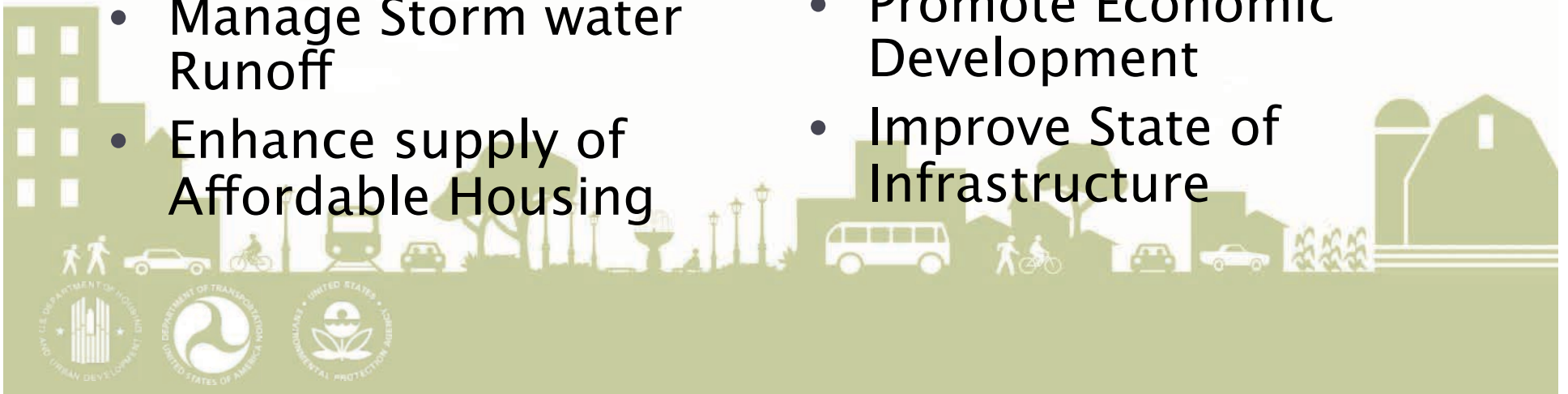
Outcomes and Benefits

Short-Term

- Increase Community Involvement
- Promote Economic Development
- Preserve Recreational and Open Space
- Manage Storm water Runoff
- Enhance supply of Affordable Housing

Long-Term

- Enhance Local Utilization of Transit
- Increased Accessibility of Job Centers
- Promote Livability, Walkability
- Promote Economic Development
- Improve State of Infrastructure



Visit www.RansonRenewed.com
for more information.





Food District

@ weinland park



February 15, 2014



A Community Campus



A Dynamic Vision for the Community



So, what did we learn?

**QUESTIONS,
CONVERSATION, AUDIENCE
PARTICIPATION**



Partnership has never been more important

<http://sustainablecommunities.gov>

"Let us put our minds together and see what life we can make for our children."

- *Tatanka Iyotanka (Sitting Bull), Hunkpapa*

